



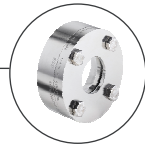
Full view or partial view with clamp connections for all hygienic processes

- Fully traceable materials
- Hygienic design minimizes bacterial traps
- Suitable for CIP and SIP
- Stress, crack and shatter resistant

Hygienic Processing Components.....



Type BBS-05
Quick Connect



Type BBS-07
Block Flanges



Type BBS-10
Ball Check Valves



Type 2103
Diaphragm Valve



Type 8221
Conductivity



Type 8650
Process Automation

These sterile flow indicators can be installed in any position to observe liquid flow in any direction. The flow indicator is usually employed to detect either the presence or absence of solutions, or to observe fluids for turbulence, color or clarity. They are ideal for high purity applications.

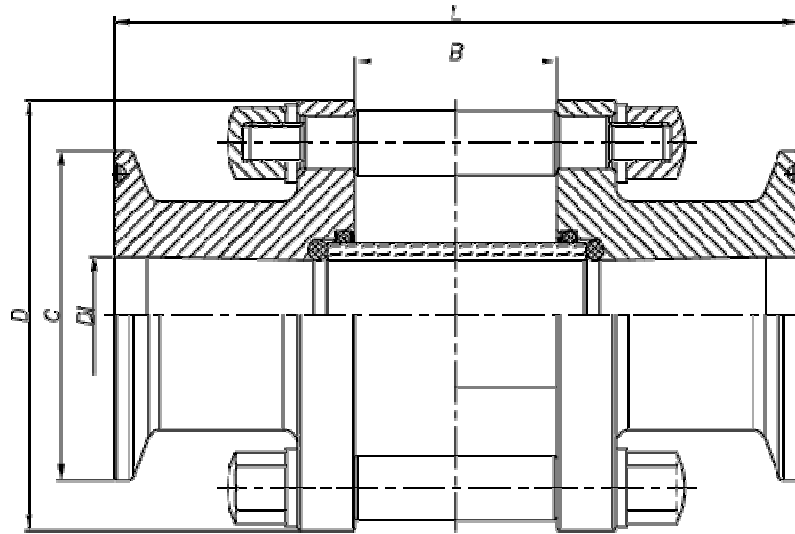
Typical applications in:

- Biotechnology
- Pharmaceutical
- Chemical
- Dairy and Food
- Beverage
- Cosmetic

The popular full view version allows full 360° process vision; this means you can observe fluid flow from any position.

Technical Overview	
Available Sizes/Standards	ISO DN08 to DN100 SMS DN06...DN100 BSOD DN1/4" to DN8" DIN06 to DN100 Larger sizes available on request
Body Material	Stainless Steel 316L 1.4435 BN2 Special Materials Example: Hastelloy
Glass	Borosilicate Glass
Sealing Material	EPDM, PTFE
Internal Surface Finish External Surface Finish	Ra ≤ 0.8 µm Standard Electropolished Standard
Process Temperature Ambient Temperature	-60 to + 300 °C -20 to +80 °C
Media	Gases or Liquids.
Media Pressure	-1 to + 8 Bar (subject to temperature)
Certification Available	Material 3.1, FDA, USP VI

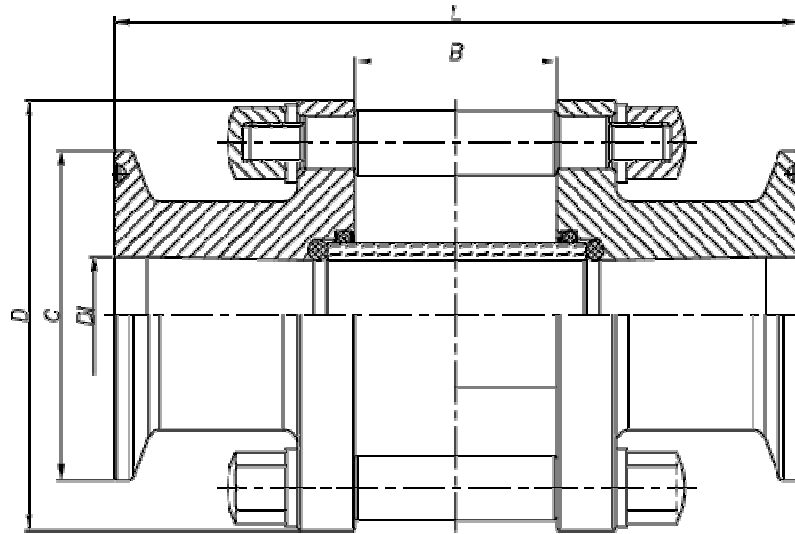
TIS BBS-03F Inline Flow Indicator with Clamp V00.2010 EN



ISO Sterile Inline Full View Flow Indicator / Clamp Connections

Size	D mm	C mm	Di mm	B mm	L mm	BBS Item Key (Part No: EPDM)	BBS Item Key (Part No: FEP)
DN08	59.00	25.00	10.30	19.50	91.50	BBS-3F-SA.B08.Z00.35.0 (741395)	BBS-3F-SA.B08.Z00.35.3 (741397)
DN10	59.00	25.00	14.00	26.40	91.00	BBS-3F-SA.B10.Z00.35.0 (741403)	BBS-3F-SA.B10.Z00.35.3 (741405)
DN15	66.00	50.50	18.10	31.00	111.00	BBS-3F-SA.B15.Z00.35.0 (741429)	BBS-3F-SA.B15.Z00.35.3 (741431)
DN20	73.00	50.50	23.70	32.00	111.00	BBS-3F-SA.B20.Z00.35.0 (741436)	BBS-3F-SA.B20.Z00.35.3 (741438)
DN25	73.00	50.50	29.70	32.00	111.00	BBS-3F-SA.B25.Z00.35.0 (741448)	BBS-3F-SA.B25.Z00.35.3 (741450)
DN32	90.00	64.00	38.40	41.00	121.00	BBS-3F-SA.B32.Z00.35.0 (741458)	BBS-3F-SA.B32.Z00.35.3 (741460)
DN40	100.00	64.00	44.30	60.00	146.00	BBS-3F-SA.B40.Z00.35.0 (741466)	BBS-3F-SA.B40.Z00.35.3 (741468)
DN50	124.10	77.50	56.30	80.00	171.00	BBS-3F-SA.B50.Z00.35.0 (741474)	BBS-3F-SA.B50.Z00.35.3 (741476)
DN65	135.00	91.00	71.50	94.00	181.00	BBS-3F-SA.B65.Z00.35.0 (741481)	BBS-3F-SA.B65.Z00.35.3 (741483)
DN80	145.00	106.00	84.30	110.00	196.00	BBS-3F-SA.B80.Z00.35.0 (741488)	BBS-3F-SA.B80.Z00.35.3 (741490)
DN100	170.00	130.00	109.10	118.00	216.00	BBS-3F-SA.B100.Z00.35.0 (741417)	BBS-3F-SA.B100.Z00.35.3 (741419)

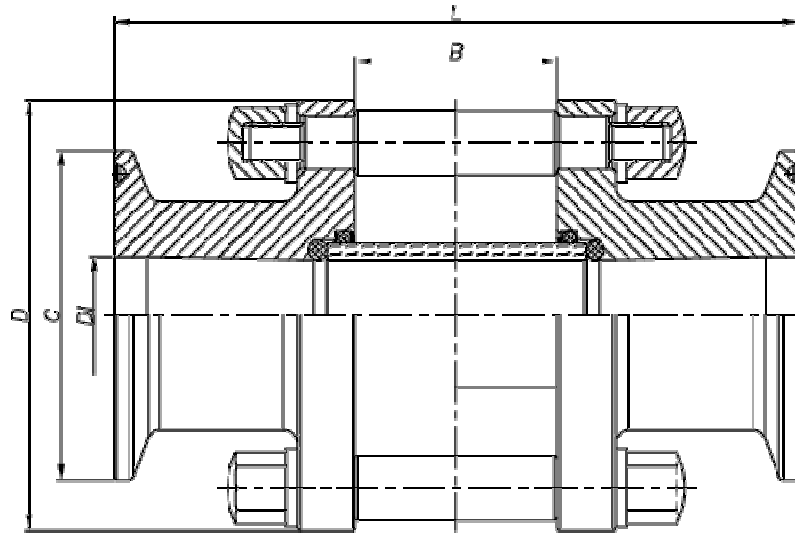
TIS BBS-03F Inline Flow Indicator with Clamp V00.2010 EN



SMS Sterile Inline Full View Flow Indicator / Clamp Connections

Size	D mm	C mm	Di mm	B mm	L mm	BBS Item Key (Part No: EPDM)	BBS Item Key (Part No: FEP)
DN 06	59.00	25.00	6.00	19.50	91.50	BBS-3F-SA.E06.F00.35.0 (On Request)	BBS-3F-SA.E06.F00.35.3 (On Request)
DN 08	59.00	25.00	8.00	19.50	91.50	BBS-3F-SA.E08.F00.35.0 (741640)	BBS-3F-SA.E08.F00.35.3 (741642)
DN 10	65.00	25.00	10.00	26.40	105.00	BBS-3F-SA.E10.F00.35.0 (On Request)	BBS-3F-SA.E10.F00.35.3 (On Request)
DN 15	65.00	25.00	16.00	31.00	105.00	BBS-3F-SA.E15.F00.35.0 (On Request)	BBS-3F-SA.E15.F00.35.3 (741617)
DN 20	70.00	50.50	20.00	32.00	105.00	BBS-3F-SA.E20.F00.35.0 (On Request)	BBS-3F-SA.E20.F00.35.3 (On Request)
DN 25	70.00	50.50	22.60	32.00	111.00	BBS-3F-SA.E25.F00.35.0 (On Request)	BBS-3F-SA.E25.F00.35.3 (On Request)
DN 32	80.00	64.00	29.60	41.00	111.00	BBS-3F-SA.E32.F00.35.0 (On Request)	BBS-3F-SA.E32.F00.35.3 (On Request)
DN40	82.00	64.00	35.60	60.00	121.00	BBS-3F-SA.E40.F00.35.0 (On Request)	BBS-3F-SA.E40.F00.35.3 (On Request)
DN 50	100.00	77.50	48.60	80.00	140.00	BBS-3F-SA.E50.F00.35.0 (On Request)	BBS-3F-SA.E50.F00.35.3 (On Request)
DN65	125.00	91.00	60.30	94.00	175.00	BBS-3F-SA.E65.F00.35.0 (On Request)	BBS-3F-SA.E65.F00.35.3 (On Request)
DN80	135.00	106.00	72.90	110.00	196.00	BBS-3F-SA.E80.F00.35.0 (On Request)	BBS-3F-SA.E80.F00.35.3 (On Request)
DN100	On Request					BBS-3F-SA.E100.F00.35.0 (On Request)	BBS-3F-SA.E100.F00.35.3 (On Request)

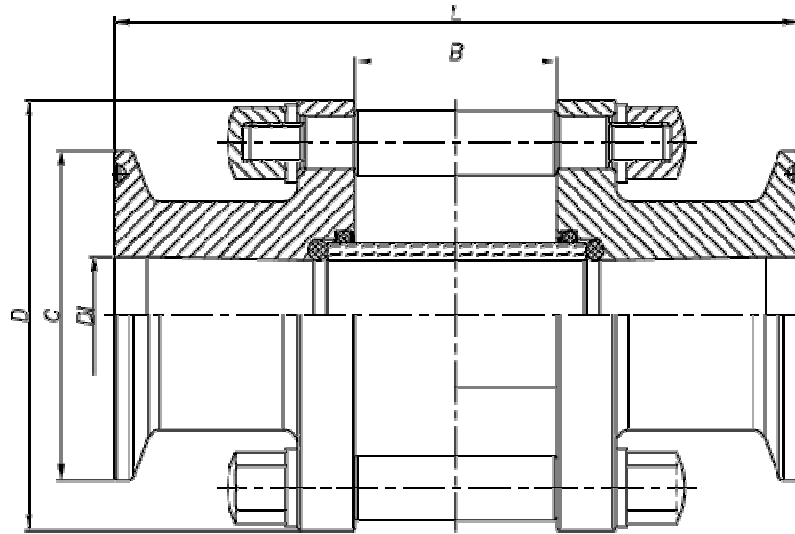
TIS BBS-03F Inline Flow Indicator with Clamp V00.2010 EN



BS-OD Sterile Inline Full View Flow Indicator / Clamp Connections

Size	D mm	C mm	Di mm	B mm	L mm	BBS Item Key (Part No: EPDM)	BBS Item Key (Part No: FEP)
DN 1/4"	50.00	25.00	4.57	19.50	90.00	BBS-3F-SA.C02.M00.35.0 (On Request)	BBS-3F-SA.C02.M00.35.3 (On Request)
DN 3/8"	50.00	25.00	7.75	19.50	90.00	BBS-3F-SA.C03.M00.35.0 (741502)	BBS-3F-SA.C03.M00.35.3 (741503)
DN 1/2"	59.00	25.00	9.40	19.50	91.50	BBS-3F-SA.C05.M00.35.0 (741511)	BBS-3F-SA.C05.M00.35.3 (741513)
DN 3/4"	65.00	25.00	15.75	33.00	105.00	BBS-3F-SA.C07.M00.35.0 (741520)	BBS-3F-SA.C07.M00.35.3 (741522)
DN 1"	73.00	50.50	22.10	36.00	105.00	BBS-3F-SA.C10.M00.35.0 (741537)	BBS-3F-SA.C10.M00.35.3 (741541)
DN 1.1/2"	82.00	50.50	38.40	37.00	105.00	BBS-3F-SA.C15.M00.35.0 (741552)	BBS-3F-SA.C15.M00.35.3 (741554)
DN 2"	100.00	64.00	47.50	54.00	152.40	BBS-3F-SA.C20.M00.35.0 (741565)	BBS-3F-SA.C20.M00.35.3 (741567)
DN2.1/2"	124.00	77.50	60.20	67.00	151.00	BBS-3F-SA.C25.M00.35.0 (741574)	BBS-3F-SA.C25.M00.35.3 (741576)
DN3"	135.00	91.00	72.90	97.00	181.00	BBS-3F-SA.C30.M00.35.0 (741586)	BBS-3F-SA.C30.M00.35.3 (741588)
DN4"	155.00	119.00	97.38	119.00	206.00	BBS-3F-SA.C40.M00.35.0 (741596)	BBS-3F-SA.C40.M00.35.3 (741598)
DN6"	215.00	167.00	146.86	139.00	254.00	BBS-3F-SA.C60.M00.35.0 (741600)	BBS-3F-SA.C60.M00.35.3 (On Request)
DN8"	265.00	217.50	198.00	155.00	302.00	BBS-3F-SA.C80.M00.35.0 (741606)	BBS-3F-SA.C80.M00.35.3 (On Request)

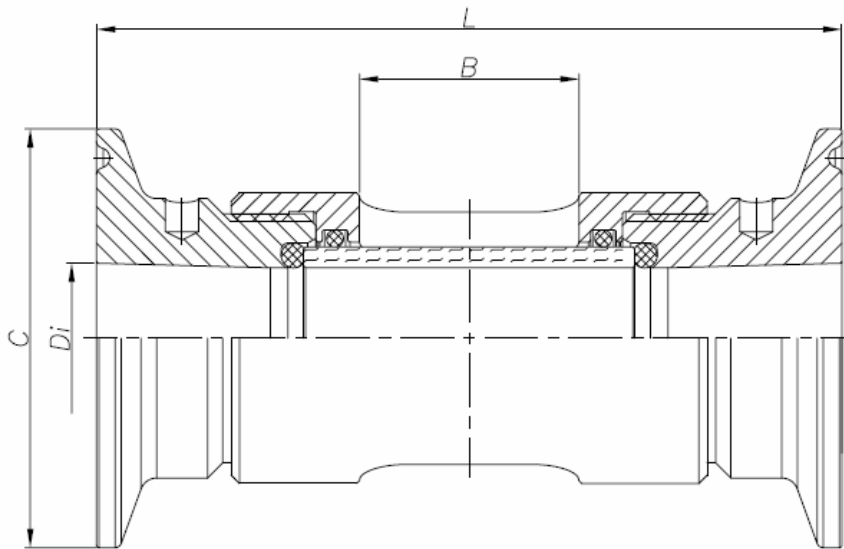
TIS BBS-03F Inline Flow Indicator with Clamp V00.2010 EN



DIN Sterile Inline Full View Flow Indicator / Clamp Connections

Size	D mm	C mm	Di mm	B mm	L mm	BBS Item Key (Part No: EPDM)	BBS Item Key (Part No: FEP)
DN 06	59.00	25.00	6.00	19.50	91.00	BBS-3F-SA.D06.F00.35.0 (On Request)	BBS-3F-SA.D06.F00.35.3 (On Request)
DN 08	59.00	25.00	8.00	19.50	91.00	BBS-3F-SA.D08.F00.35.0 (On Request)	BBS-3F-SA.D08.F00.35.3 (On Request)
DN 10	59.00	34.00	10.00	26.40	91.00	BBS-3F-SA.D10.F00.35.0 (On Request)	BBS-3F-SA.D10.F00.35.3 (On Request)
DN 15	65.00	34.00	16.00	31.00	105.00	BBS-3F-SA.D15.F00.35.0 (On Request)	BBS-3F-SA.D15.F00.35.3 (741617)
DN 20	70.00	34.00	20.00	32.00	105.00	BBS-3F-SA.D20.F00.35.0 (On Request)	BBS-3F-SA.D20.F00.35.3 (On Request)
DN 25	80.00	50.50	26.00	32.00	111.00	BBS-3F-SA.D25.F00.35.0 (On Request)	BBS-3F-SA.D25.F00.35.3 (On Request)
DN 32	82.00	64.00	32.00	41.00	105.00	BBS-3F-SA.D32.F00.35.0 (On Request)	BBS-3F-SA.D32.F00.35.3 (On Request)
DN40	90.00	64.00	38.00	60.00	121.00	BBS-3F-SA.D40.F00.35.0 (On Request)	BBS-3F-SA.D40.F00.35.3 (On Request)
DN 50	100.00	77.50	50.00	80.00	140.00	BBS-3F-SA.D50.F00.35.0 (On Request)	BBS-3F-SA.D50.F00.35.3 (On Request)
DN65	130.00	91.00	66.00	94.00	175.00	BBS-3F-SA.D65.F00.35.0 (On Request)	BBS-3F-SA.D65.F00.35.3 (On Request)
DN80	145.00	106.00	81.00	110.00	196.00	BBS-3F-SA.D80.F00.35.0 (741638)	BBS-3F-SA.D80.F00.35.3 (On Request)
DN100	160.00	130.00	100.00	118.00	205.00	BBS-3F-SA.D100.F00.35.0 (On Request)	BBS-3F-SA.D100.F00.35.3 (On Request)

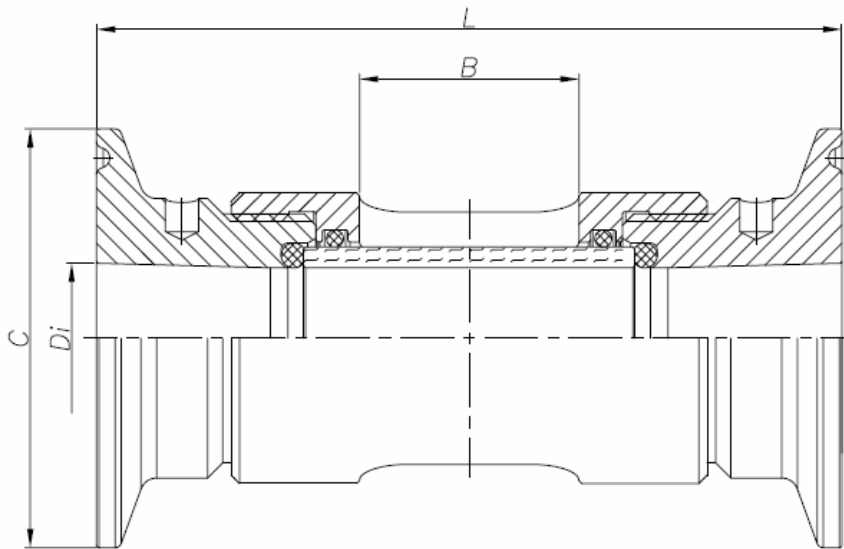
TIS BBS-03F Inline Flow Indicator with Clamp V00.2010 EN



ISO Sterile Inline Partial View Flow Indicator / Clamp Connections

Size	C mm	Di mm	B mm	L mm	BBS Item Key (Part No: EPDM)	BBS Item Key (Part No: FEP)
DN08	25.00	10.30	20.00	76.00	BBS-3F-SA.B08.B00.35.0 (741395)	BBS-3F-SA.B08.B00.35.3 (741397)
DN10	25.00	14.00	22.60	79.30	BBS-3F-SA.B10.B00.35.0 (741403)	BBS-3F-SA.B10.B00.35.3 (741405)
DN15	50.50	18.10	26.50	90.00	BBS-3F-SA.B15.B00.35.0 (741425)	BBS-3F-SA.B15.B00.35.3 (741427)
DN20	50.50	23.70	24.00	89.00	BBS-3F-SA.B20.B00.35.0 (741433)	BBS-3F-SA.B20.B00.35.3 (741434)
DN25	50.50	29.70	24.00	90.00	BBS-3F-SA.B25.B00.35.0 (741444)	BBS-3F-SA.B25.B00.35.3 (741446)
DN32	64.00	38.40	35.80	115.00	BBS-3F-SA.B32.B00.35.0 (741454)	BBS-3F-SA.B32.B00.35.3 (741456)
DN40	64.00	44.30	48.00	120.00	BBS-3F-SA.B40.B00.35.0 (741462)	BBS-3F-SA.B40.B00.35.3 (741464)
DN50	77.50	56.30	79.40	187.00	BBS-3F-SA.B50.B00.35.0 (741470)	BBS-3F-SA.B50.B00.35.3 (741472)
DN65	91.00	72.10	On Request		BBS-3F-SA.B65.B00.35.0 (741478)	BBS-3F-SA.B65.B00.35.3 (741479)
DN80	106.00	84.30	On Request		BBS-3F-SA.B80.B00.35.0 (741485)	BBS-3F-SA.B80.B00.35.3 (741486)
DN100	130.00	109.10	On Request		BBS-3F-SA.B100.B00.35.0 (741413)	BBS-3F-SA.B100.B00.35.3 (741415)

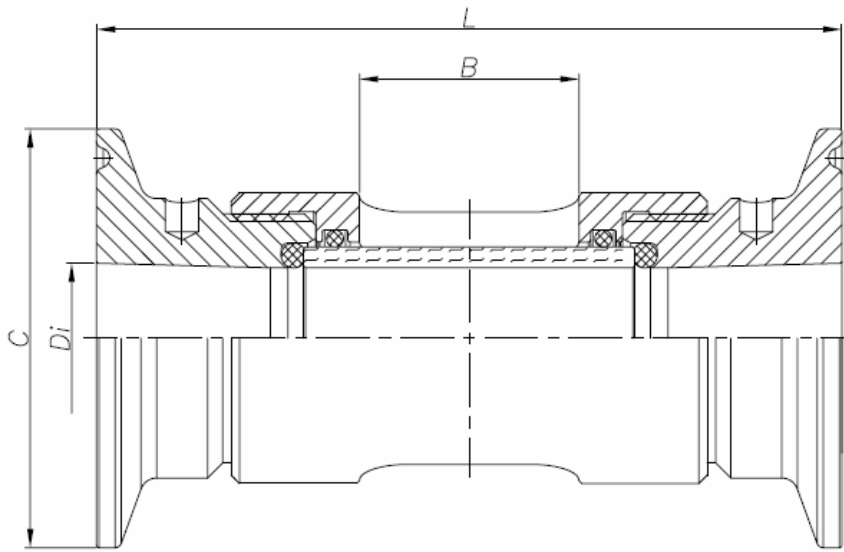
TIS BBS-03F Inline Flow Indicator with Clamp V00.2010 EN



SMS Sterile Inline Partial View Flow Indicator / Clamp Connections

Size	C mm	Di mm	B mm	L mm	BBS Item Key (Part No: EPDM)	BBS Item Key (Part No: FEP)
DN 06	25.00	6.00	On Request		BBS-3F-SA.E06.E00.35.0 (On Request)	BBS-3F-SA.E06.E00.35.3 (On Request)
DN 08	25.00	8.00	On Request		BBS-3F-SA.E08.E00.35.0 (On Request)	BBS-3F-SA.E08.E00.35.3 (On Request)
DN 10	25.00	10.00	On Request		BBS-3F-SA.E10.E00.35.0 (On Request)	BBS-3F-SA.E10.E00.35.3 (On Request)
DN 15	50.50	16.00	On Request		BBS-3F-SA.E15.E00.35.0 (On Request)	BBS-3F-SA.E15.E00.35.3 (On Request)
DN 20	50.50	20.00	On Request		BBS-3F-SA.E20.E00.35.0 (On Request)	BBS-3F-SA.E20.E00.35.3 (On Request)
DN 25	50.50	22.60	On Request		BBS-3F-SA.E25.E00.35.0 (741640)	BBS-3F-SA.E25.E00.35.3 (741642)
DN 32	50.50	29.60	On Request		BBS-3F-SA.E32.E00.35.0 (On Request)	BBS-3F-SA.E32.E00.35.3 (On Request)
DN40	50.50	35.60	On Request		BBS-3F-SA.E40.E00.35.0 (On Request)	BBS-3F-SA.E40.E00.35.3 (On Request)
DN 50	64.00	48.60	On Request		BBS-3F-SA.E50.E00.35.0 (On Request)	BBS-3F-SA.E50.E00.35.3 (On Request)
DN65	77.50	60.30	On Request		BBS-3F-SA.E65.E00.35.0 (On Request)	BBS-3F-SA.E65.E00.35.3 (On Request)
DN80	91.00	72.90	On Request		BBS-3F-SA.E80.E00.35.0 (On Request)	BBS-3F-SA.E80.E00.35.3 (On Request)
DN100	On Request				BBS-3F-SA.E100.E00.35.0 (On Request)	BBS-3F-SA.E100.E00.35.3 (On Request)

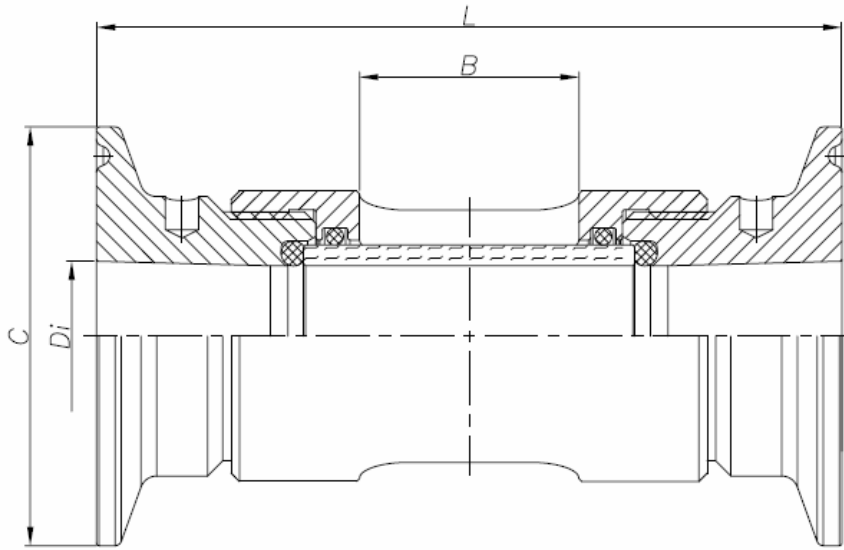
TIS BBS-03F Inline Flow Indicator with Clamp V00.2010 EN



BS-OD Sterile Inline Partial View Flow Indicator / Clamp Connections

Size	C mm	Di mm	B mm	L mm	BBS Item Key (Part No: EPDM)	BBS Item Key (Part No: FEP)
DN 1/4"	25.00	4.57	20.20	65.40	BBS-3F-SA.C02.C00.35.0 (741492)	BBS-3F-SA.C02.C00.35.3 (741496)
DN 3/8"	25.00	7.75	20.00	78.00	BBS-3F-SA.C03.C00.35.0 (741498)	BBS-3F-SA.C03.C00.35.3 (741500)
DN 1/2"	25.00	9.40	20.00	76.00	BBS-3F-SA.C05.C00.35.0 (741505)	BBS-3F-SA.C05.C00.35.3 (741509)
DN 3/4"	25.00	15.75	30.00	87.00	BBS-3F-SA.C07.C00.35.0 (741516)	BBS-3F-SA.C07.C00.35.3 (741518)
DN 1"	50.50	22.10	30.00	91.00	BBS-3F-SA.C10.C00.35.0 (741530)	BBS-3F-SA.C10.C00.35.3 (741533)
DN 1.1/2"	50.50	34.80	32.00	105.00	BBS-3F-SA.C15.C00.35.0 (741546)	BBS-3F-SA.C15.C00.35.3 (741550)
DN 2"	64.00	47.50	48.00	120.00	BBS-3F-SA.C20.C00.35.0 (741560)	BBS-3F-SA.C20.C00.35.3 (741563)
DN2.1/2"	77.50	60.20	55.00	150.60	BBS-3F-SA.C25.C00.35.0 (741571)	BBS-3F-SA.C25.C00.35.3 (741573)
DN3"	91.00	72.90	90.00	175.00	BBS-3F-SA.C30.C00.35.0 (741580)	BBS-3F-SA.C30.C00.35.3 (741584)
DN4"	119.00	97.38	110.00	200.00	BBS-3F-SA.C40.C00.35.0 (741592)	BBS-3F-SA.C40.C00.35.3 (741594)
DN6"	167.00	146.86	On Request		BBS-3F-SA.C60.C00.35.0 (741600)	BBS-3F-SA.C60.C00.35.3 (On Request)
DN8"	217.50	198.00	On Request		BBS-3F-SA.C80.C00.35.0 (741606)	BBS-3F-SA.C80.C00.35.3 (On Request)

TIS BBS-03F Inline Flow Indicator with Clamp V00.2010 EN



DIN Sterile Inline Partial View Flow Indicator / Clamp Connections

Size	C mm	Di mm	B mm	L mm	BBS Item Key (Part No: EPDM)	BBS Item Key (Part No: FEP)
DN 06	25.00	6.00	20.00	76.00	BBS-3F-SA.D06.D00.35.0 (On Request)	BBS-3F-SA.D06.D00.35.3 (On Request)
DN 08	25.00	8.00	22.60	79.30	BBS-3F-SA.D08.D00.35.0 (On Request)	BBS-3F-SA.D08.D00.35.3 (On Request)
DN 10	34.00	10.00	26.50	86.00	BBS-3F-SA.D10.D00.35.0 (On Request)	BBS-3F-SA.D10.D00.35.3 (On Request)
DN 15	34.00	16.00	30.00	92.00	BBS-3F-SA.D15.D00.35.0 (741612)	BBS-3F-SA.D15.D00.35.3 (741615)
DN 20	34.00	20.00	30.00	91.00	BBS-3F-SA.D20.D00.35.0 (741619)	BBS-3F-SA.D20.D00.35.3 (On Request)
DN 25	50.50	26.00	32.00	98.00	BBS-3F-SA.D25.D00.35.0 (741623)	BBS-3F-SA.D25.D00.35.3 (734168)
DN 32	50.50	32.00	32.00	90.00	BBS-3F-SA.D32.D00.35.0 (741625)	BBS-3F-SA.D32.D00.35.3 (741627)
DN40	64.00	38.00	32.00	108.00	BBS-3F-SA.D40.D00.35.0 (741629)	BBS-3F-SA.D40.D00.35.3 (On Request)
DN 50	64.00	50.00	48.00	120.00	BBS-3F-SA.D50.D00.35.0 (741631)	BBS-3F-SA.D50.D00.35.3 (On Request)
DN65	91.00	66.00	55.00	154.80	BBS-3F-SA.D65.D00.35.0 (741634)	BBS-3F-SA.D65.D00.35.3 (On Request)
DN80	106.00	81.00	55.00	177.80	BBS-3F-SA.D80.D00.35.0 (741636)	BBS-3F-SA.D80.D00.35.3 (On Request)
DN100	On Request				BBS-3F-SA.D100.D00.35.0 (On Request)	BBS-3F-SA.D100.D00.35.3 (On Request)

TIS BBS-03F Inline Flow Indicator with Clamp V00.2010 EN