

Robust, Compact and Easy to Operate  
Digital Positioner Types 8791 & 8792, Process Controller Type 8793



- Single unit for spring return or double acting actuators
- Large programmable backlit display with 4 button programming
- Zero air consumption at rest position
- One touch calibration for commissioning
- IP65/67 protection for tough environments
- Optional Profibus, ASi versions available

## Digital positioners & controllers where you need them

The new Type 8791/2 positioner and Type 8793 with integral process controller completes Bürkert's solution for electropneumatic valve control. These intelligent digital positioners are for quarter turn and linear process valves, as well as virtually any pneumatically controlled instrument including non-Bürkert valves, cylinders and dampers. The positioners are available for direct mount or in remote versions, all with IP65/67 housings for robust service even in challenging environments.

Using Bürkert's exclusive piloting technology to deliver unmatched precision, these new digital positioners are able to control to up to 150 litres per minute for both spring return and double acting actuators. This represents a significant jump on traditional positioner flow rates, giving far wider scope of use.

### Positioner Type 8791 Basic

No LCD display; super bright visual position and LED status indication. Programme with DTM via computer, software freely downloaded from our website. Also simple settings via dip switches.



### Positioner Type 8792

Available as a local SideMount positioner, or as a remote version.

All units with super bright visual indicator at front.



### Process Controller Type 8793

With full PID function, designed for discrete control loops or for true DCS with network interface.



### Positioner Type 8791 Basic

Designed for cabinet mount, without display (or visual indication).



### Positioners & Process Controller Features

Bürkert's new digital positioners combine performance with enhanced customer benefit even under tough conditions. Complementing the ELEMENT control valve range these Bürkert devices are designed for:

- Remote mount, where valves are in difficult to reach or see locations (positioner typically wall or cabinet mounted)
- Quarter turn pneumatically actuated valves (either direct or remote mounted)
- Retrofit to other control valves (yoke mounted)
- Other pneumatic devices; cylinders, dampers, etc

These devices are exceptionally rugged and deliver long life service life with a range of smart features:

- Integrated pilot valve system using filtered recycled air; no contamination
- Low air usage; no air use at rest position
- One unit for spring return & double acting actuators
- Suitable for all valve sizes; one positioner type for site
- One minute, push-button commissioning
- High quality materials used throughout, compact body
- Network communication interfaces (optional)
- IP65/67 protection; for demanding environments

The Type 8791 Basic delivers for standard positioner needs; it delivers most of the features without an LCD display and is programmed from your computer. A panel mount version is available (pictured bottom left).

At the other end of the scale, the Type 8793 with integral process controller can function as the brains of its own control loop within a DCS. Each Type 8793 can replace multiple expensive components from a traditional control loop.

- Inputs pt100, frequency & 4..20mA
- Outputs 4..20mA plus 2 x binary
- Full PID on board; smart option for networked systems

## Technical Data

Positioner with internal or external displacement measurement system.

### FUNCTION

- Process controller with automatic type detection to the control loop and automatic parameterisation (temperature, pressure, filling level & flow rate)
- Actual process value 4...20 mA, Pt100 or frequency signal

### ELECTRICAL INPUTS AND OUTPUTS

Set-point preset via standard signals 4...20 mA, 5...10 V or with PROFIBUS DPV1

- Binary input
- Two optional binary outputs
- Optional initiators for detecting the end positions
- Optional analogue feedback

### ACTUATING SYSTEM AIR FLOW RATE

Spring-return & double-acting up to 150 NI/min (at 6 bar)

### SUPPLY PRESSURE

1.4 to 7 bar

### HOUSING

Materials: Aluminum/plastic/stainless steel  
Protection type: IP65 and IP67

### OPERATING VOLTAGE

24 V DC +/- 10%

### DETECTION OF END POSITIONS

Optional inductive proximity switches

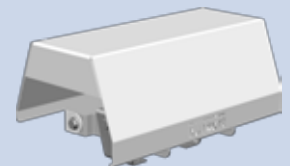
### COMMUNICATION

Optional PROFIBUS DPV1 for Type 8792 & Type 8793  
Optional AS-interface for Type 8791



Combined with a Bürkert control valve, used as a remote version for valves in difficult to reach or see locations.

Left: Bürkert ELEMENT angle seat control valve, remote Type 8793 controller with PID.



Stainless steel hood to protect positioners from harsh conditions. Hinged opening.

Mounting on pneumatically actuated quarter turn valves (ball or butterfly) in accordance with VDI/VDE 3845.

Left: Bürkert Type 2672 cast iron butterfly valve with Type 8792 positioner.



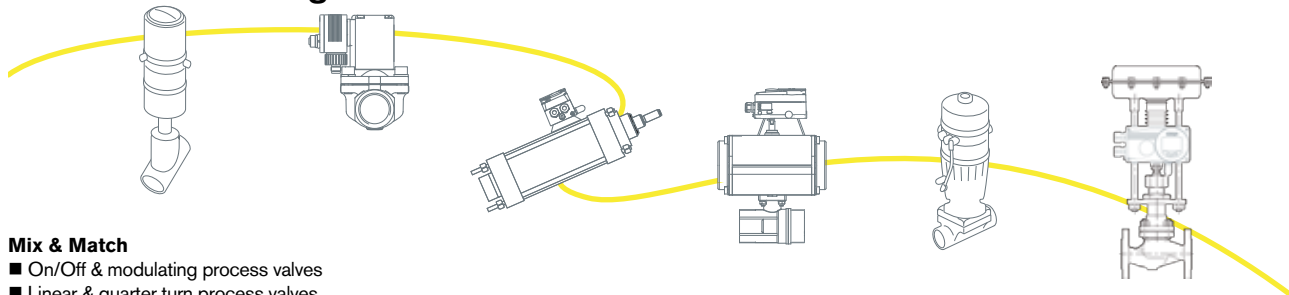
Mounting on yoke actuator in accordance with NAMUR IEC 534-6.

Left: Non Bürkert control valve, old style, retrofitted with modern positioner Type 8792.

**Bürkert Fluid Control Systems**  
Bürkert Contromatic Australia Pty Ltd  
Telephone 1300 888 868  
Facsimile 1300 888 076  
sales.au@burkert.com  
www.burkert.com.au

**Bürkert Fluid Control Systems**  
Bürkert Contromatic New Zealand Ltd  
Telephone 0800 BURKERT  
Facsimile 0800 33 33 77  
sales.nz@burkert.com  
www.burkert.co.nz

## Ask us about integrated network interfaces & benefits



### Mix & Match

- On/Off & modulating process valves
- Linear & quarter turn process valves
- Valves & other pneumatic devices
- Discrete sub-control loops

Call to find out more!